

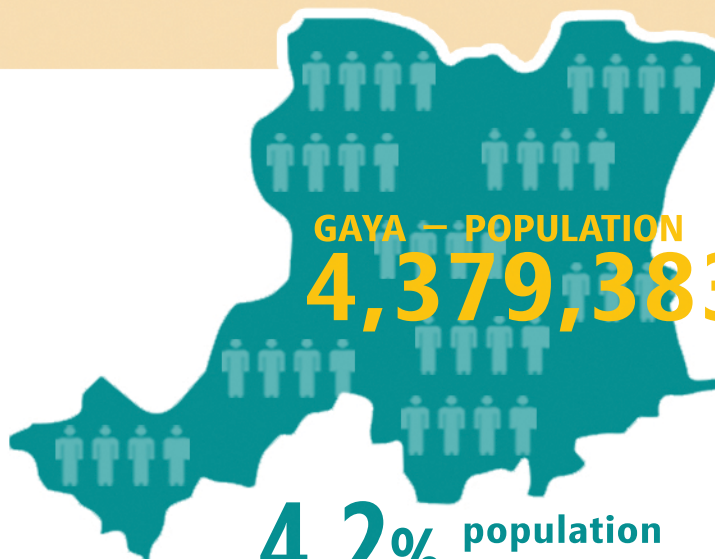
GAYA

Located in south Bihar, Gaya is a tourist destination which gets its name from the mythological demon Gayasur. The district reflects the rich religious and cultural diversity of the state as it is a holy place for Hindus, Jains and Buddhists. It also has river Phalgu that flows underground.

BIHAR – POPULATION
104,099,452



GAYA – POPULATION
4,379,383



4.2% population
of Bihar

SWASTH INTERVENTIONS IN GAYA



Community Led Total Sanitation



Gram Varta



Mobile Kunji



Mobile Water Quality Testing Laboratory



Uddeepan



Village Health, Sanitation & Nutrition Committees



Reducing Violence Against Women



Village Health, Sanitation & Nutrition Days



Conditional Cash Transfer



Female Handpump Caretakers

HUMAN DEVELOPMENT INDICATORS



Sex ratio
932



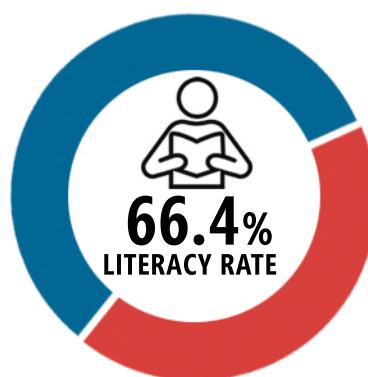
Sex ratio of child population
(0-6 years)
959



Total fertility rate
3



Percentage of women (currently 20-24 years),
who were married before the legal age of 18 years
63.9%



Male
76%



Female
55.9%

HEALTH

Children fully immunised



Postnatal care received within 48 hours



Institutional delivery



Antenatal care received three or more times



Antenatal care received from government sources



Neonatal mortality rate
28



Infant mortality rate
49



Under-five mortality rate
62



NUTRITION



Newborns breast-fed within 1 hour of birth

33.4%



Children exclusively breast-fed for 6 months

18.6%



Children given semi-solid food other than breast milk

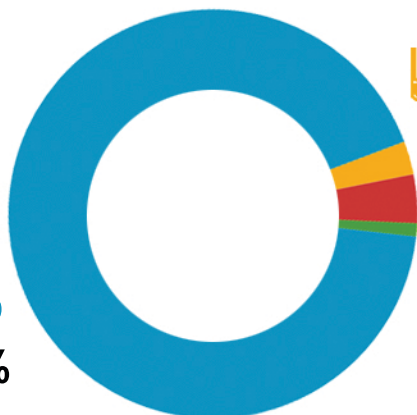
7.4%

WASH

IMPROVED SOURCES OF DRINKING WATER **87.9%**



Handpump
81.3%



Tubewell
2.3%



Tapwater
3.4%



Covered well
0.9%

HOUSEHOLDS WITH LATRINE FACILITY

24.2%



Source: Census 2011, and Annual Health Survey 2012-2013

Sector Wide Approach to Strengthening Health in Bihar (SWASTH), Government of Bihar
Initiative Supported by Department for International Development (DFID), UK

Bihar Technical Assistance Support Team (BTAST)



Knowledge product developed by

